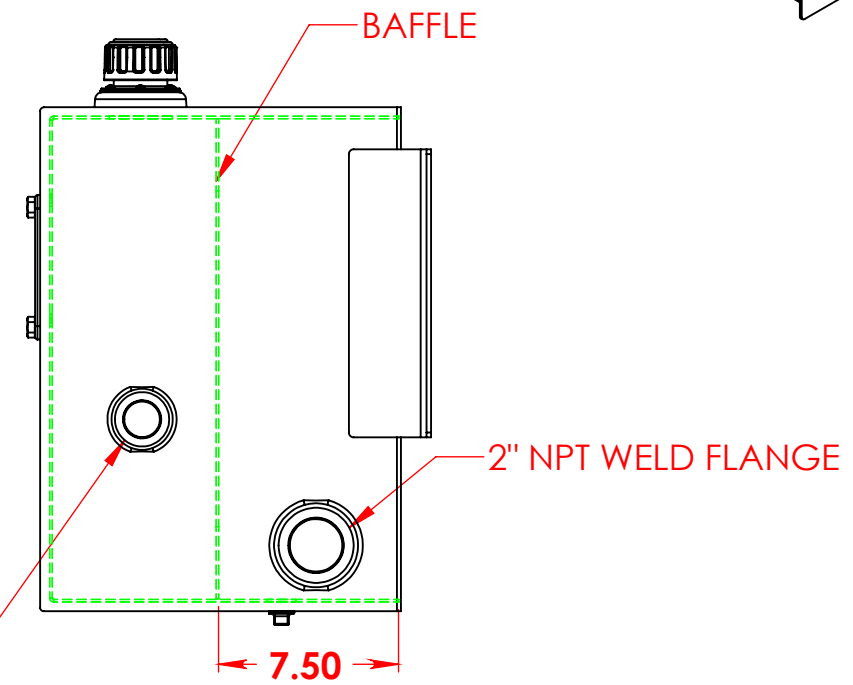
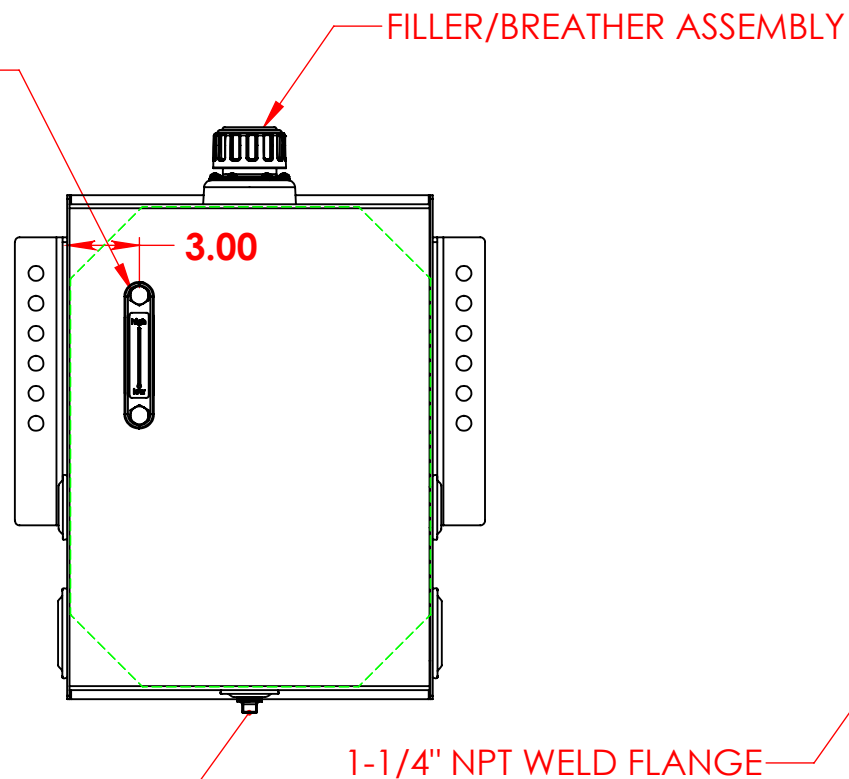
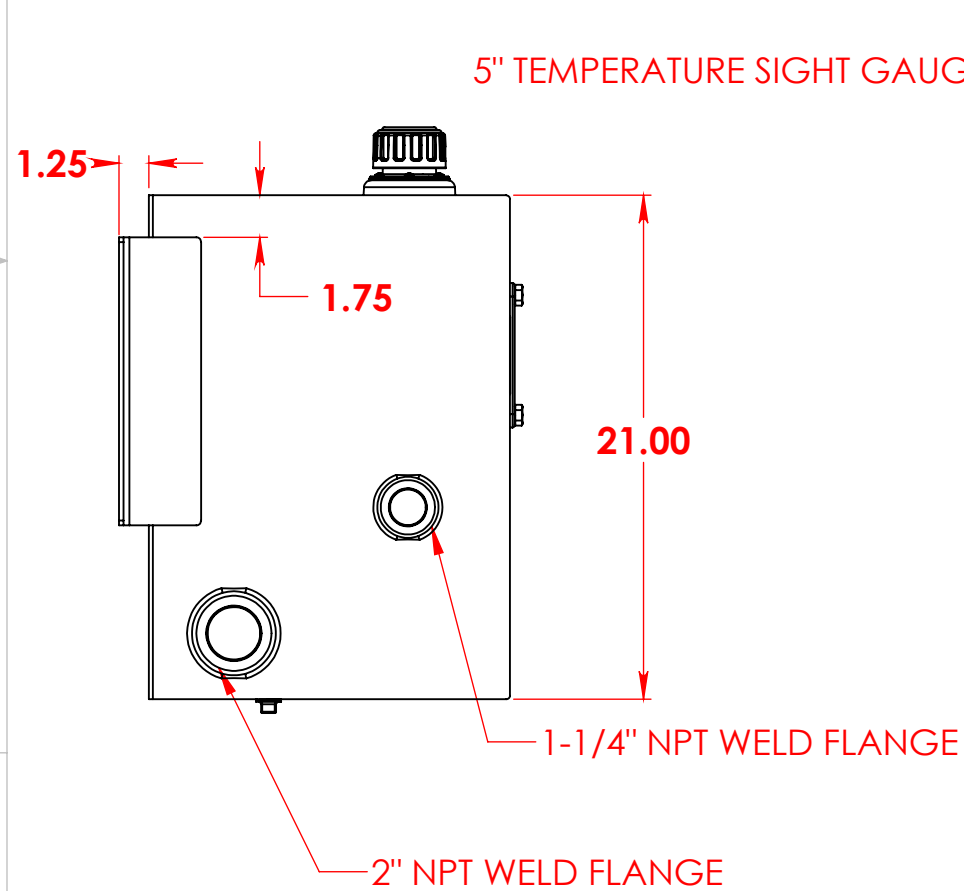
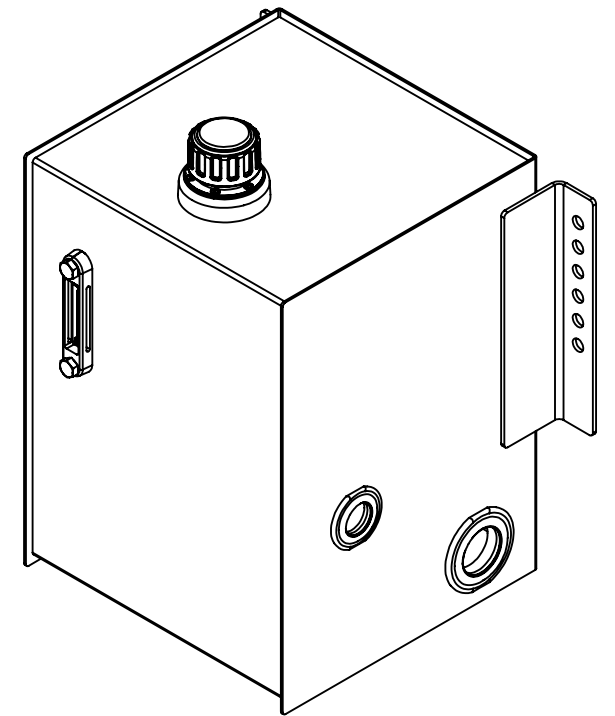
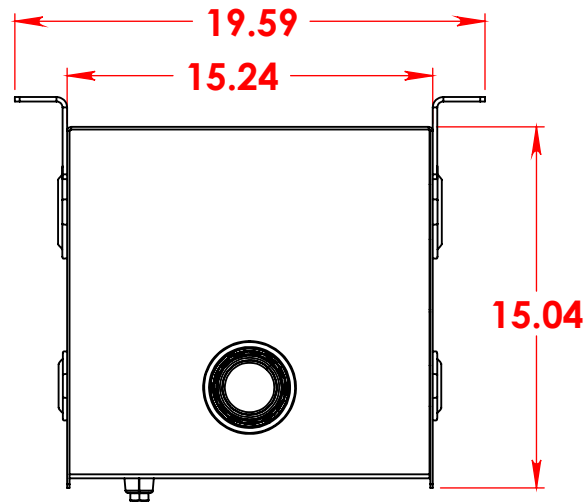


NOTES FOR STANDARD CONSTRUCTION:
 ...PRESSURE TESTED @ 5psi PER FWHA.
 ...INTERIOR FREE OF FOREIGN MATTER.
 ...FILLER CAP, MAGNETIC DRAIN PLUG PROVIDED.
 ...FULL BAFFLE(S) WHERE SHOWN.
 ...STEEL CONSTRUCTION:
 12ga HRPO BODY,
 SEMI-GLOSS BLACK ENAMEL APPLIED.
 ...ALL OPENINGS PLUGGED & INTERIOR FOGGED WITH
 ANTI-CORROSION OIL PRIOR TO SHIPPING



3/4" NPT WELD FLANGE & MAGNETIC DRAIN PLUG

PROPRIETARY AND CONFIDENTIAL
 THE INFORMATION CONTAINED IN THIS
 DRAWING IS THE SOLE PROPERTY OF
 PROPOWER MFG. INC. ANY
 REPRODUCTION IN PART OR AS A WHOLE
 WITHOUT THE WRITTEN PERMISSION OF
 PROPOWER MFG. INC. IS PROHIBITED.

| | | | |
|--------------------------------------|--|------------------------|--------------|
| UNLESS OTHERWISE SPECIFIED: | | NAME | DATE |
| DIMENSIONS ARE IN INCHES | | DRAWN | A.B 11/20/09 |
| TOLERANCES: | | CHECKED | |
| FRACTIONAL ± 1/16 | | ENG APPR. | |
| ANGULAR: MACH ± 1° BEND ± 1° | | MFG APPR. | |
| TWO PLACE DECIMAL ± .06 | | Q.A. | |
| THREE PLACE DECIMAL ± .031 | | COMMENTS: | |
| INTERPRET GEOMETRIC TOLERANCING PER: | | THIRD ANGLE PROJECTION | |
| MATERIAL | | HRPO STEEL | |
| FINISH | | | |
| DO NOT SCALE DRAWING | | | |

| | | |
|--------------------------------------------------------------------------------------------------------------------------------------|--------------|--------------|
| PROPOWER MFG. INC. OLDCASTLE, ONTARIO, CANADA Ph; 519-737-1197 Fax; 519-737-1918 TOLL FREE 1877-7412365 Web; metaltanks.com | | |
| TITLE: | | |
| 15/20RW15 18 usg HYDRAULIC RESERVOIR | | |
| SIZE | DWG. NO. | REV |
| B | 11091 | 1 |
| SCALE: 1:8 | WEIGHT: | SHEET 1 OF 2 |