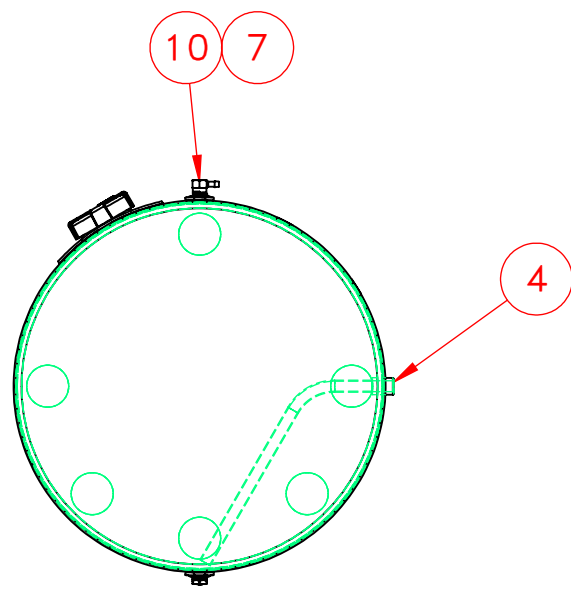
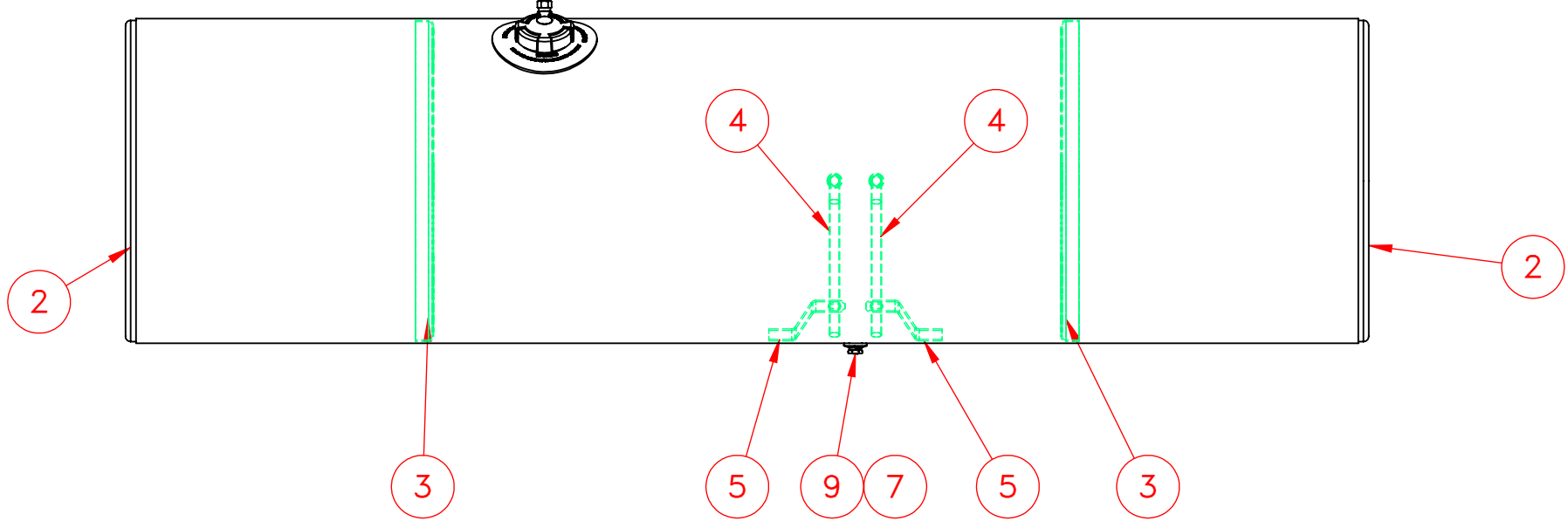
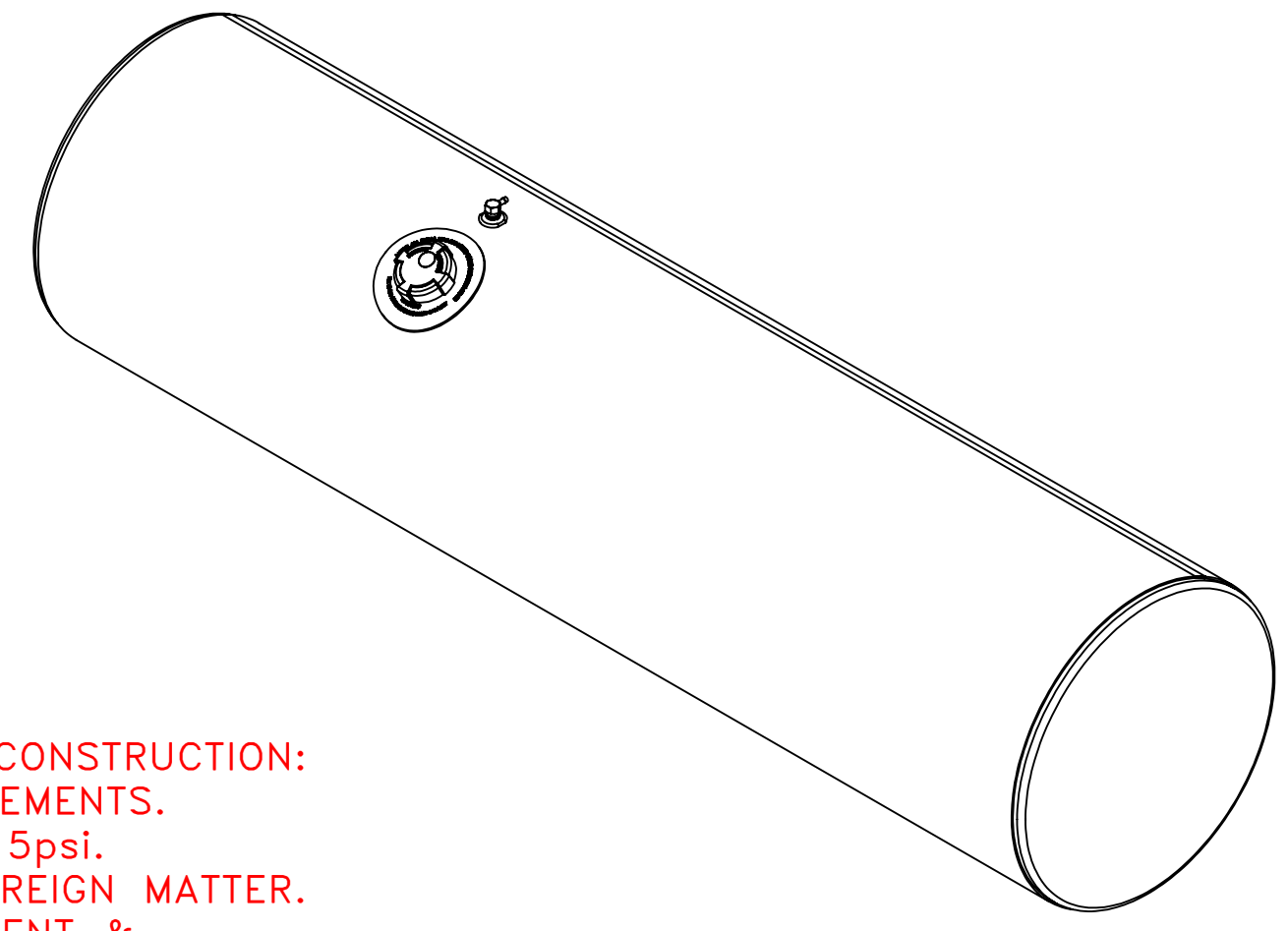


NOTES FOR STANDARD CONSTRUCTION:  
 ...MEETS FMCSA REQUIREMENTS.  
 ...PRESSURE TESTED @ 5psi.  
 ...INTERIOR FREE OF FOREIGN MATTER.  
 ...FILLER CAP, DRAIN, VENT & DRAW/RETURN TUBES PROVIDED.  
 ...FULL BAFFLE(S) WHERE SHOWN.  
 ...ALUMINUM CONSTRUCTION:  
 5052-H32 ALUMINUM, BRIGHT FINISH  
 HEADS ARE .100" & SHELL IS .125".  
 ...ALL OPENINGS PLUGGED PRIOR TO SHIPPING



ITEM NO.	PART NUMBER	MakeOrBuy	DESCRIPTION	QTY.
1	116-1465		1/8" Auminum Wrap	1
2	160-0053		23" Aluminum Head	2
3	162-0053		23" Aluminum Baffle	2
4	490-0102		1/2" Down Tube	2
5	490-3001		Down Tube Support	2
6	116-0001		1/8" Auminum Wrap	1
7	260-0005	\$	1/2" FNPT Aluminum weld flange	2
8	316-0094	\$	Filler 3" Pocket Flange	1
9	458-0100	\$	1/2" NPT Ball Check Drain Plug	1
10	454-0937	\$	1/2" NPT Ball Check Vent	1
11	452-1628	\$	Fuel Cap 3" Pressure Relief	1

UNLESS OTHERWISE SPECIFIED: DIMENSIONS ARE IN INCHES TOLERANCES: FRACTIONAL ± 1/16 ANGULAR: MACH ± 1° BEND ± 1° TWO PLACE DECIMAL ± .06 THREE PLACE DECIMAL ± .031	DRAWN	NAME	DATE	PROPOWER MFG. INC. WINDSOR, ONTARIO, CANADA Ph: 519-737-1197 Fax: 519-737-1918 TOLL FREE 1-877-741-2365 Web: metaltanks.com
	CHECKED	A.B	03/17/21	
	ENG APPR.			
	MFG APPR.			
INTERPRET GEOMETRIC TOLERANCING PER:	COMMENTS:			TITLE:
MATERIAL	ALUMINUM			FL-R23CFA89-E 160 US gal DIESEL FUEL TANK
FINISH				SIZE DWG. NO. REV
DO NOT SCALE DRAWING	THIRD ANGLE PROJECTION			<b>C</b> <b>27327</b>
PROPRIETARY AND CONFIDENTIAL THE INFORMATION CONTAINED IN THIS DRAWING IS THE SOLE PROPERTY OF PROPOWER MFG. INC. ANY REPRODUCTION IN PART OR AS A WHOLE WITHOUT THE WRITTEN PERMISSION OF PROPOWER MFG. INC. IS PROHIBITED.				SCALE: 1:12, WEIGHT: 101 LBS SHEET 1 OF 1