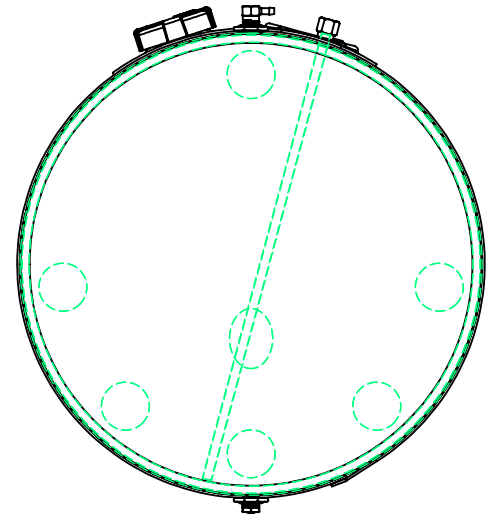
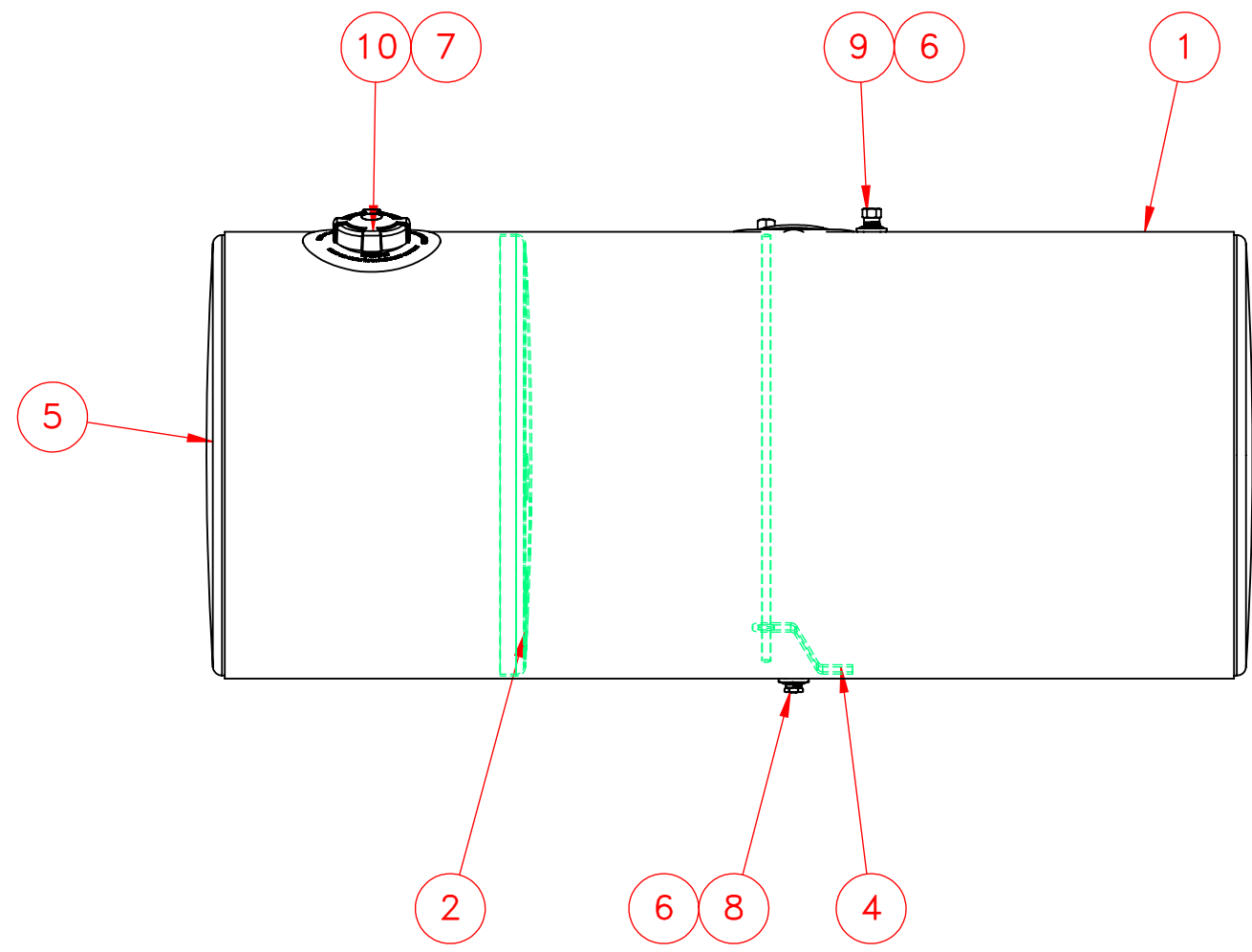


DETAIL A
SCALE 1 : 2



ITEM NO.	PART NUMBER	MakeOrBuy	DESCRIPTION	QTY.
1	116-1405		1/8" Auminum Wrap	1
2	162-0054		24" Baffle	1
3	260-0733	\$	Float/Draw/Return Plate	1
4	490-3001		Down Tube Support	1
5	160-0054		24" Head 0.100" Aluminum	2
6	260-0005	\$	1/2" FNPT Aluminum weld flange	2
7	316-0094	\$	Filler 3" Pocket Flange	1
8	458-0100	\$	1/2" NPT Ball Check Drain Plug	1
9	454-0937	\$	1/2" NPT Ball Check Vent	1
10	452-1628	\$	Fuel Cap 3" Pressure Relief	1
11	368-0005	\$	1/4" NPT Brass Drain Plug Hex	1
12	490-0024-Z		1/2" NPT Down Tube	1

NOTES FOR STANDARD CONSTRUCTION:
 ...MEETS FMCSA REQUIREMENTS.
 ...PRESSURE TESTED @ 5psi
 ...INTERIOR FREE OF FOREIGN MATTER.
 ...FILLER CAP, DRAIN PLUG & VENT PROVIDED.
 ...FULL BAFFLE(S) WHERE SHOWN
 ...ALUMINUM CONSTRUCTION:
 5052-H32 ALUMINUM, BRIGHT FINISH
 HEADS ARE 0.100" & SHELL IS 0.125"
 ...ALL OPENINGS PLUGGED PRIOR TO SHIPPING

PROPRIETARY AND CONFIDENTIAL THE INFORMATION CONTAINED IN THIS DRAWING IS THE SOLE PROPERTY OF PROPOWER MFG. INC. ANY REPRODUCTION IN PART OR AS A WHOLE WITHOUT THE WRITTEN PERMISSION OF PROPOWER MFG. INC. IS PROHIBITED.	UNLESS OTHERWISE SPECIFIED:	DRAWN	NAME	DATE	PROPOWER MFG. INC. WINDSOR, ONTARIO, CANADA Ph: 519-737-1197 Fax: 519-737-1918 TOLL FREE 1-877-741-2365 Web: metaltanks.com	
	DIMENSIONS ARE IN INCHES	CHECKED	A.B	12/07/20		
	TOLERANCES: FRACTIONAL ± 1/16 ANGULAR: MACH ± 1° BEND ± 1° TWO PLACE DECIMAL ± .06 THREE PLACE DECIMAL ± .031	ENG APPR.				
	INTERPRET GEOMETRIC TOLERANCING PER:	MFG APPR.				
	MATERIAL	ALUMINUM	COMMENTS:		TITLE:	
	FINISH				KW-L24CFA50 112 US GROSS GALLONS 106 USEBLE GALLONS DIESEL FUEL TANK	
	DO NOT SCALE DRAWING	THIRD ANGLE PROJECTION			SIZE DWG. NO. REV C 26947	
					SCALE: 1:10 WEIGHT: 79 LBS SHEET 1 OF 1	