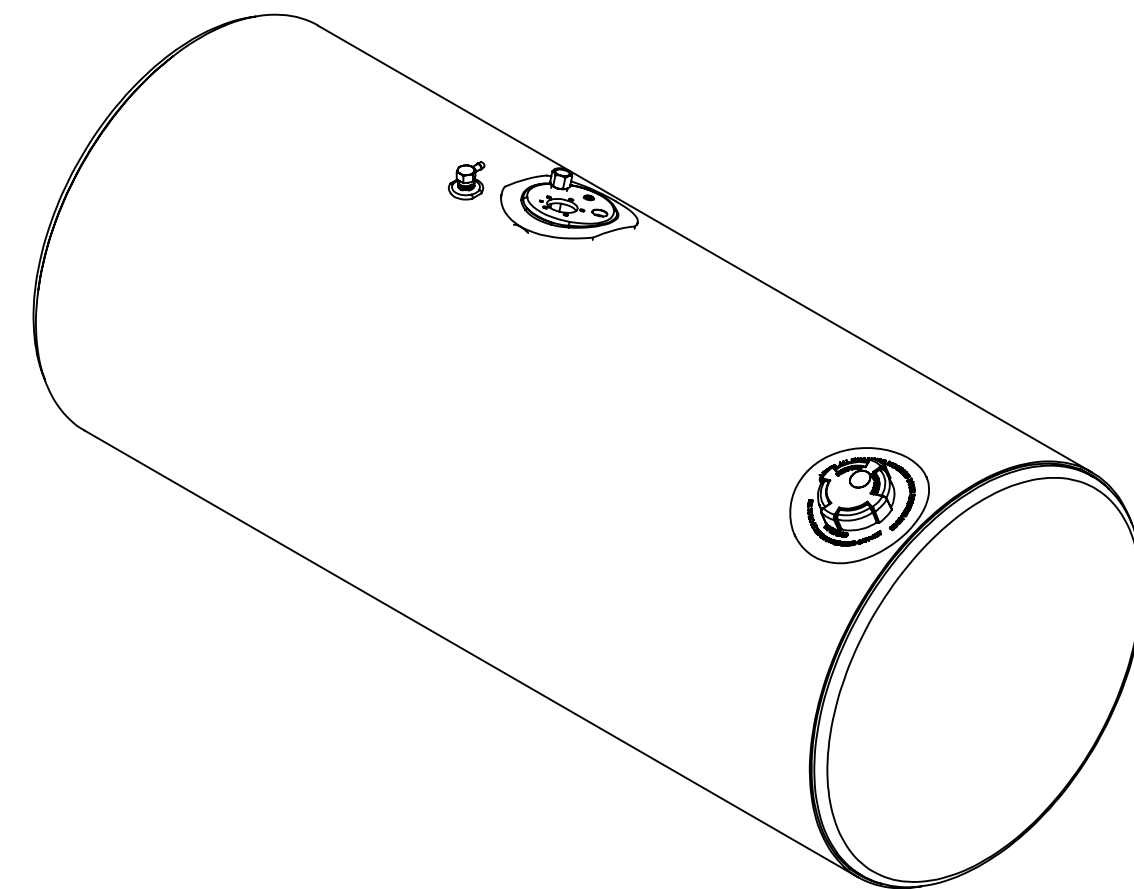
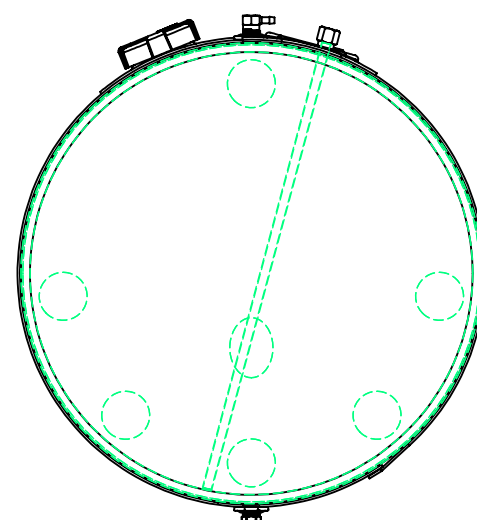
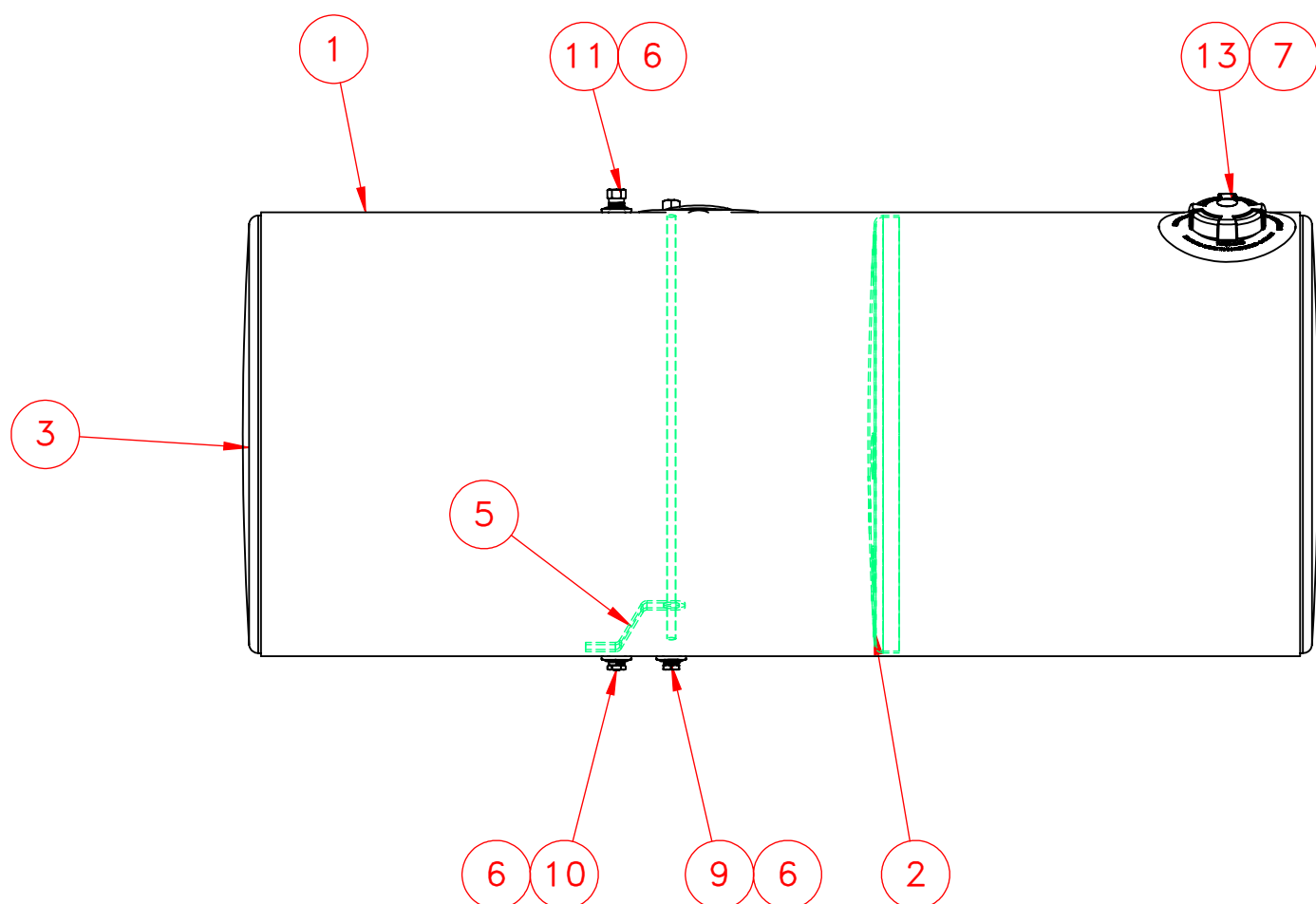


**DETAIL A  
SCALE 1 : 4**



**NOTES FOR STANDARD CONSTRUCTION:**  
 ...MEETS FMCSA REQUIREMENTS.  
 ...PRESSURE TESTED @ 5psi  
 ...INTERIOR FREE OF FOREIGN MATTER.  
 ...FILLER CAP, DRAIN PLUG & VENT PROVIDED.  
 ...FULL BAFFLE(S) WHERE SHOWN  
 ...ALUMINUM CONSTRUCTION:  
 5052-H32 ALUMINUM, BRIGHT FINISH  
 HEADS ARE 0.100" & SHELL IS 0.125"  
 ...ALL OPENINGS PLUGGED PRIOR TO SHIPPING



ITEM NO.	PART NUMBER	MakeOrBuy	DESCRIPTION	QTY.
1	116-1442		1/8" Aluminium Wrap	1
2	162-0054		24" Baffle	1
3	160-0054		24" Head 0.100" Aluminum	2
4	260-0733	\$	Float/Draw/Return Plate	1
5	490-3001		Down Tube Support	1
6	260-0005	\$	1/2" FNPT Aluminum weld flange	3
7	316-0094	\$	Filler 3" Pocket Flange	1
8	368-0005	\$	1/4" NPT Brass Drain Plug Hex	1
9	368-0010	\$	1/2" NPT Brass Plug	1
10	458-0100	\$	1/2" NPT Ball Check Drain Plug	1
11	454-0937	\$	1/2" NPT Ball Check Vent	1
12	490-0024-Z		1/2" NPT Down Tube	1
13	452-1628	\$	Fuel Cap 3" Pressure Relief	1

UNLESS OTHERWISE SPECIFIED: DIMENSIONS ARE IN INCHES TOLERANCES: FRACTIONAL ± 1/16 ANGULAR: MACH ± 1° BEND ± 1° TWO PLACE DECIMAL ± .06 THREE PLACE DECIMAL ± .031	DRAWN	NAME	DATE	PROPOWER MFG. INC. WINDSOR, ONTARIO, CANADA Ph: 519-737-1197 Fax: 519-737-1918 TOLL FREE 1-877-741-2365 Web: metaltanks.com TITLE: <b>KW-L24CFA59-B</b> <b>116 US GROSS GALLONS</b> <b>110 USEBLE GALLONS</b> <b>DIESEL FUEL TANK</b>	
	CHECKED	A.B	02/11/21		
	ENG APPR.				
	MFG APPR.				
INTERPRET GEOMETRIC TOLERANCING PER:	COMMENTS:			SIZE DWG. NO. REV <b>C 27147-1</b>	
MATERIAL	ALUMINUM			SCALE: 1:10 WEIGHT: 81 LBS SHEET 1 OF 1	
FINISH	THIRD ANGLE PROJECTION				
DO NOT SCALE DRAWING					

**PROPRIETARY AND CONFIDENTIAL**  
 THE INFORMATION CONTAINED IN THIS DRAWING IS THE SOLE PROPERTY OF PROPOWER MFG. INC. ANY REPRODUCTION IN PART OR AS A WHOLE WITHOUT THE WRITTEN PERMISSION OF PROPOWER MFG. INC. IS PROHIBITED.