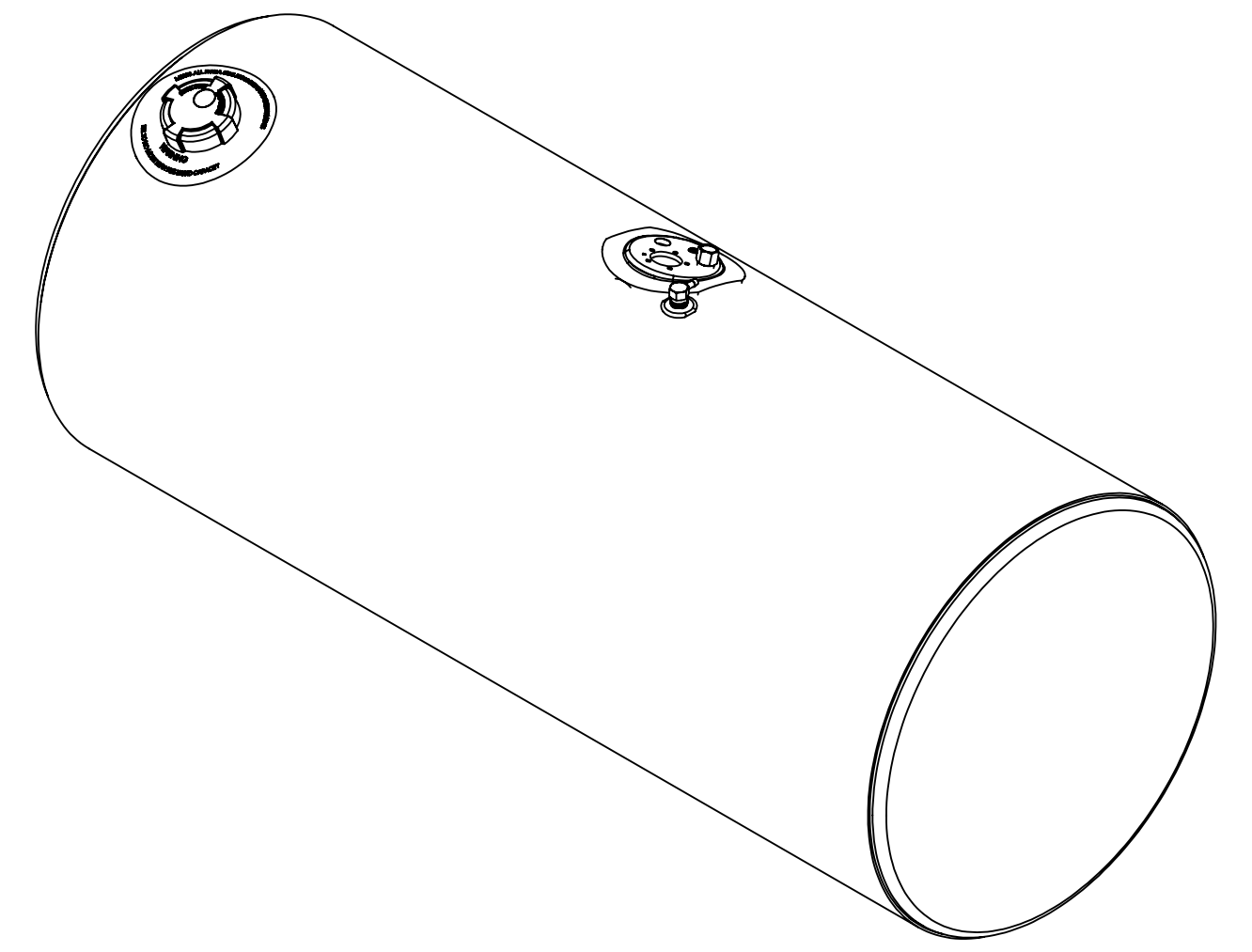
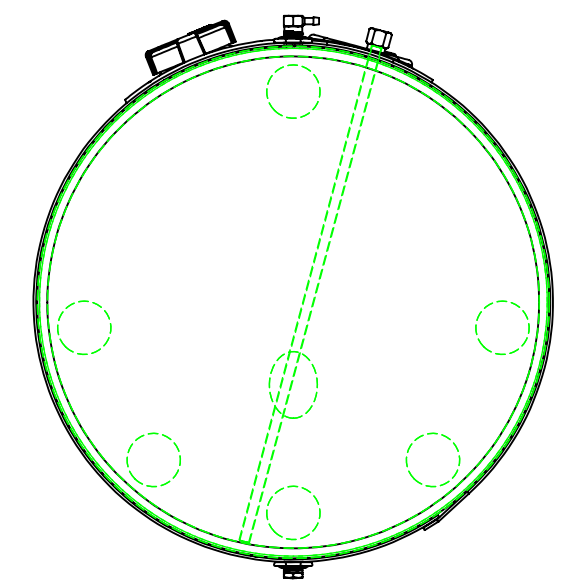
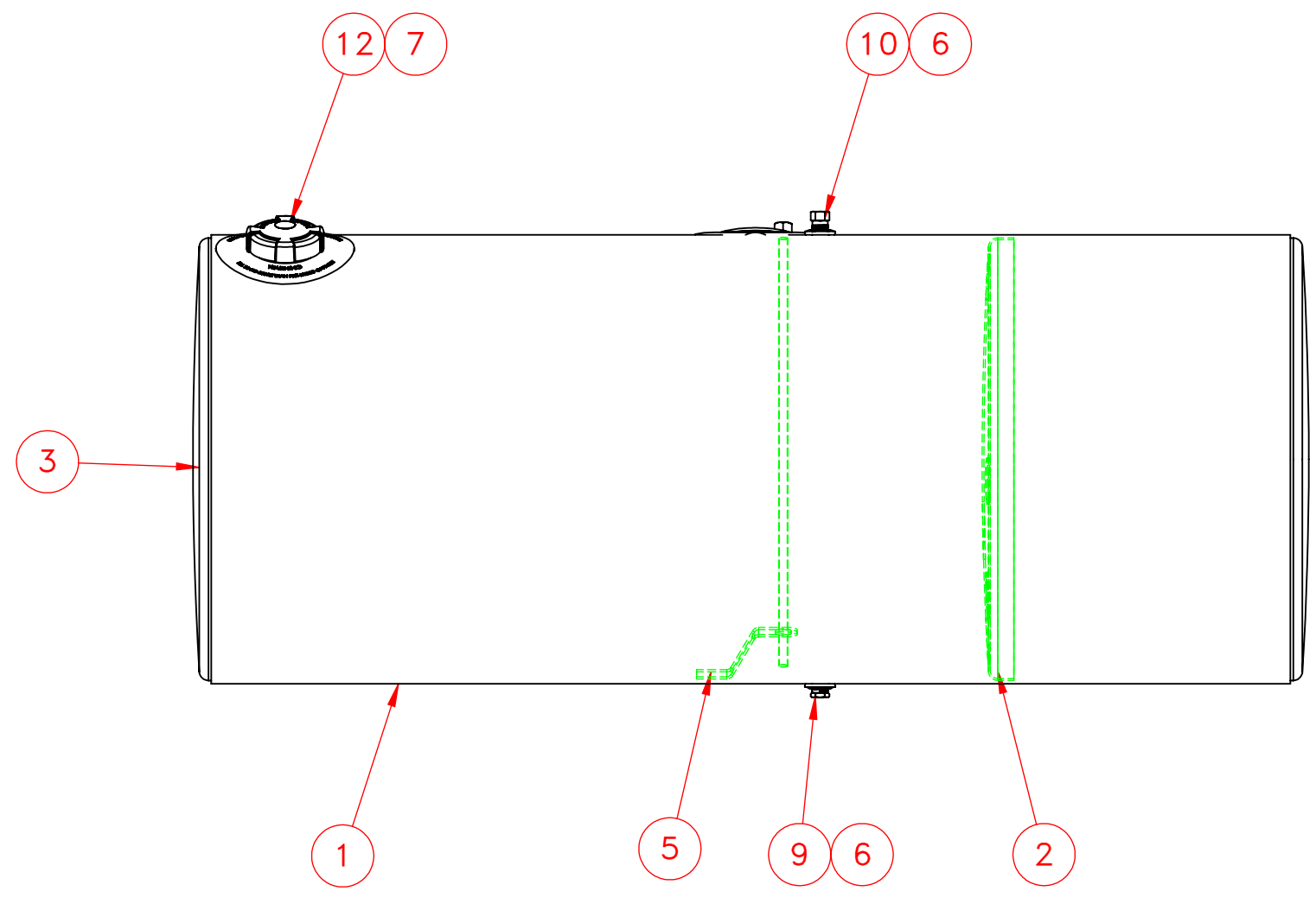


DETAIL A
SCALE 2 : 9



NOTES FOR STANDARD CONSTRUCTION:
 ...MEETS FMCSA REQUIREMENTS.
 ...PRESSURE TESTED @ 5psi
 ...INTERIOR FREE OF FOREIGN MATTER.
 ...FILLER CAP, DRAIN PLUG & VENT PROVIDED.
 ...FULL BAFFLE(S) WHERE SHOWN
 ...ALUMINUM CONSTRUCTION:
 5052-H32 ALUMINUM, BRIGHT FINISH
 HEADS ARE 0.100" & SHELL IS 0.125"
 ...ALL OPENINGS PLUGGED PRIOR TO SHIPPING



ITEM NO.	PART NUMBER	MakeOrBuy	DESCRIPTION	QTY.
1	116-1361		1/8" Aluminium Wrap	1
2	162-0054		24" Baffle	1
3	160-0054		24" Head 0.100" Aluminum	2
4	260-0733	\$	Float/Draw/Return Plate	1
5	490-3001		Down Tube Support	1
6	260-0005	\$	1/2" FNPT Aluminum weld flange	2
7	316-0094	\$	Filler 3" Pocket Flange	1
8	368-0005	\$	1/4" NPT Brass Plug Hex	1
9	458-0100	\$	1/2" NPT Ball Check Drain Plug	1
10	454-0937	\$	1/2" NPT Ball Check Vent	1
11	490-0024-Z		1/2" NPT Down Tube	1
12	452-3001	\$	Fuel Cap 3" Pressure Relief	1

<p>PROPRIETARY AND CONFIDENTIAL THE INFORMATION CONTAINED IN THIS DRAWING IS THE SOLE PROPERTY OF PROPOWER MFG. INC. ANY REPRODUCTION IN PART OR AS A WHOLE WITHOUT THE WRITTEN PERMISSION OF PROPOWER MFG. INC. IS PROHIBITED.</p>	UNLESS OTHERWISE SPECIFIED:	DRAWN	NAME	DATE	<p>PROPOWER MFG. INC. WINDSOR, ONTARIO, CANADA Ph: 519-737-1197 Fax: 519-737-1918 TOLL FREE 1-877-741-2365 Web: metaltanks.com</p>	
	DIMENSIONS ARE IN INCHES	CHECKED	A.B	08/11/20		
	TOLERANCES:	ENG APPR.	Admin	07-21-21		
	FRACTIONAL ± 1/16 ANGULAR: MACH ± 1° BEND ± 1° TWO PLACE DECIMAL ± .06 THREE PLACE DECIMAL ± .031	MFG APPR.				
	INTERPRET GEOMETRIC TOLERANCING PER:	COMMENTS:			<p>TITLE:</p> <p>KW-R24CFA60-C 118 US GROSS GALLONS 112 USABLE GALLONS DIESEL FUEL TANK</p>	
	MATERIAL	ALUMINUM			<p>SIZE DWG. NO. REV</p> <p>C 26375-2</p>	
	FINISH	DO NOT SCALE DRAWING		THIRD ANGLE PROJECTION	<p>SCALE: 1:9 WEIGHT: 82 LBS SHEET 1 OF 2</p>	