

METAL TANKS

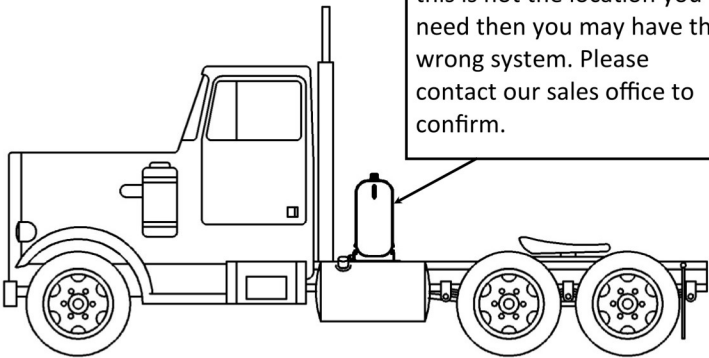
By **PROPOWER**

BEHIND CAB TANK (100 US gallon shown) HYDRAULIC RESERVOIR WITH SUPERFLEX CRADLE™

INSTALLATION MANUAL

Let's just
be sure...

This reservoir system is intended to install across the truck frame rails, behind the truck cab as shown. If this is not the location you need then you may have the wrong system. Please contact our sales office to confirm.



!!! IMPORTANT WARRANTY INFORMATION !!!



IMPORTANT:
Before You Continue...

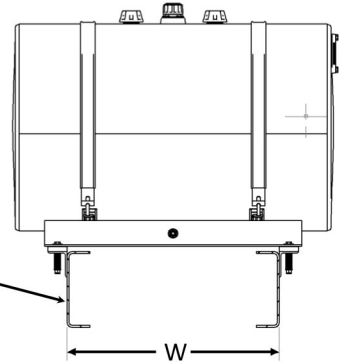
This hydraulic reservoir system - which includes the reservoir, straps, cradle and all mounting hardware - compose an engineered system which has been tested and proven effective. ANY modification, deviation, revision, addition or omission of the supplied components constitutes the cancellation of any Metaltank warranty claim.

This system MUST be installed with the provided components in accordance with the following installation instructions to be considered eligible for warranty.

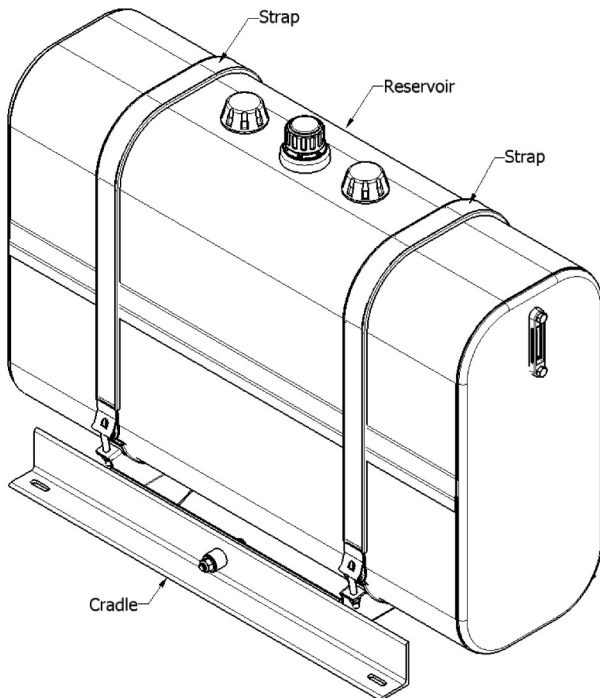
BY CONTINUING WITH THE UNPACKING AND INSTALLATION YOU HAVE ACCEPTED THESE TERMS.

The standard mounting kit will accommodate truck frame rail widths (W) from 820 to 870mm wide (32.25" to 34.25").

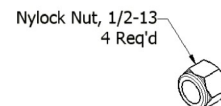
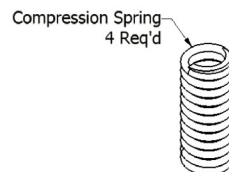
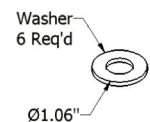
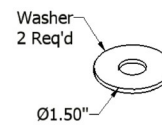
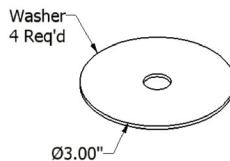
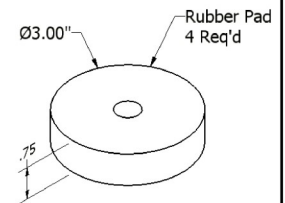
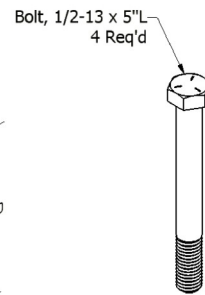
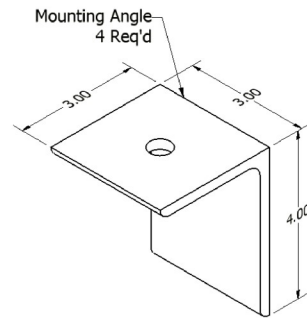
If your frame rails are not within this range please contact our sales office prior to commencing installation.



YOUR SHIPMENT CONTAINS:



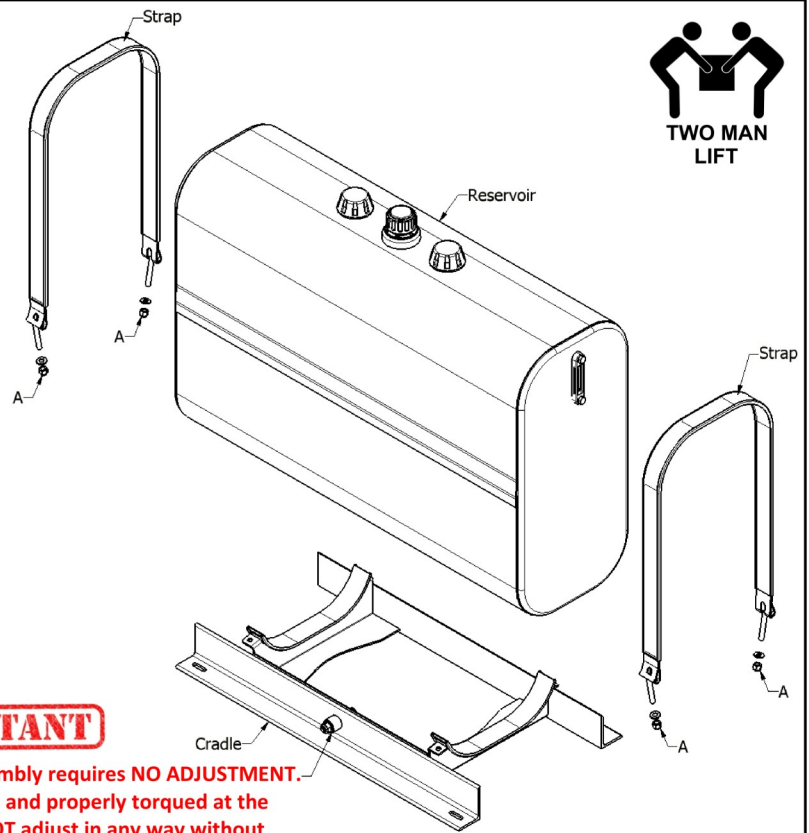
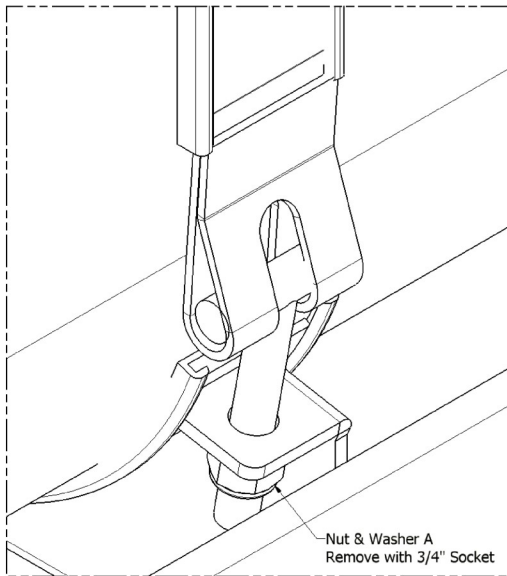
MAIN ASSEMBLY



If any parts are missing or damaged, please contact our sales office before commencing the installation.

STEP 1:

Remove all packaging and strapping from the MAIN ASSEMBLY. Separate the Reservoir and Straps from the Cradle by; Removing (4) nuts and (4) washers A, keep for reattachment Set aside the Reservoir and Straps to prevent scratching

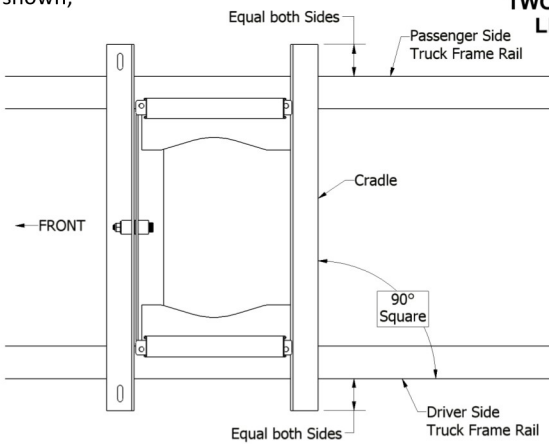


IMPORTANT

The pivot assembly requires **NO ADJUSTMENT**. It is assembled and properly torqued at the factory. **DO NOT** adjust in any way without consulting the factory first.

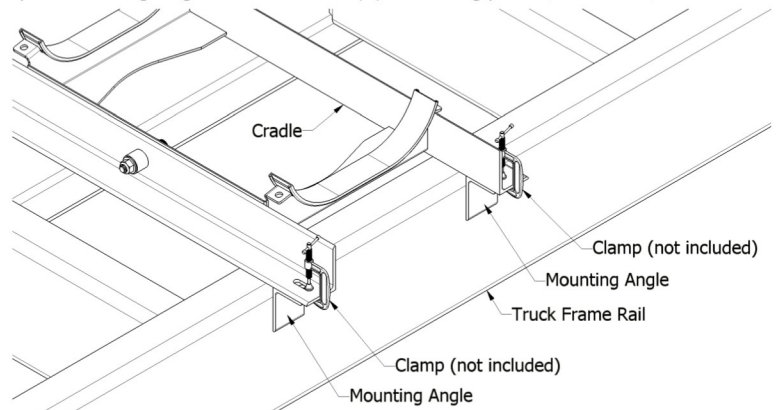
STEP 2:

Position the truck on a level, even surface Position the Cradle upon the truck frame, as shown;



STEP 3:

Clamp a Mounting Angle at each of the (4) mounting points, as shown;

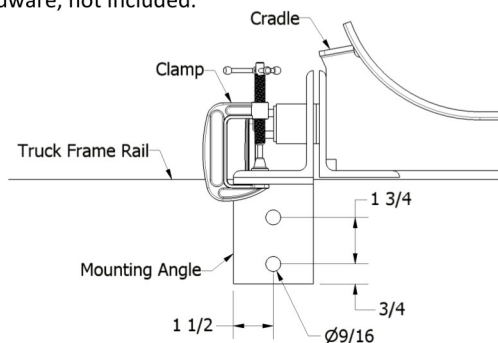


If you are unable to position the Cradle and Mounting Angles in this manner please contact our sales office before proceeding with the installation.

STEP 4:

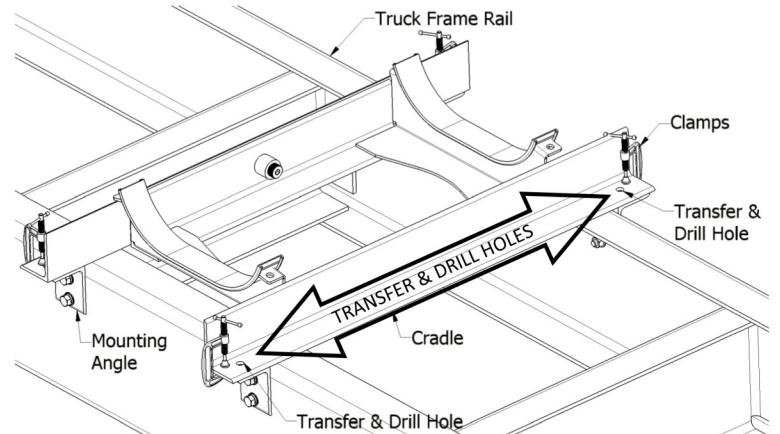
Drill (2) $\varnothing 9/16$ " holes through each Mounting Angle and through the Truck Frame Rail at each of the four mounting points, as shown.

Attach each Mounting Angle to the Truck Frame Rail with $\varnothing 1/2$ " locking hardware, not included.



STEP 5:

Transfer and drill (2) $\varnothing 9/16$ " holes from the Mounting Angles through the rear angle of the Cradle then remove clamps.

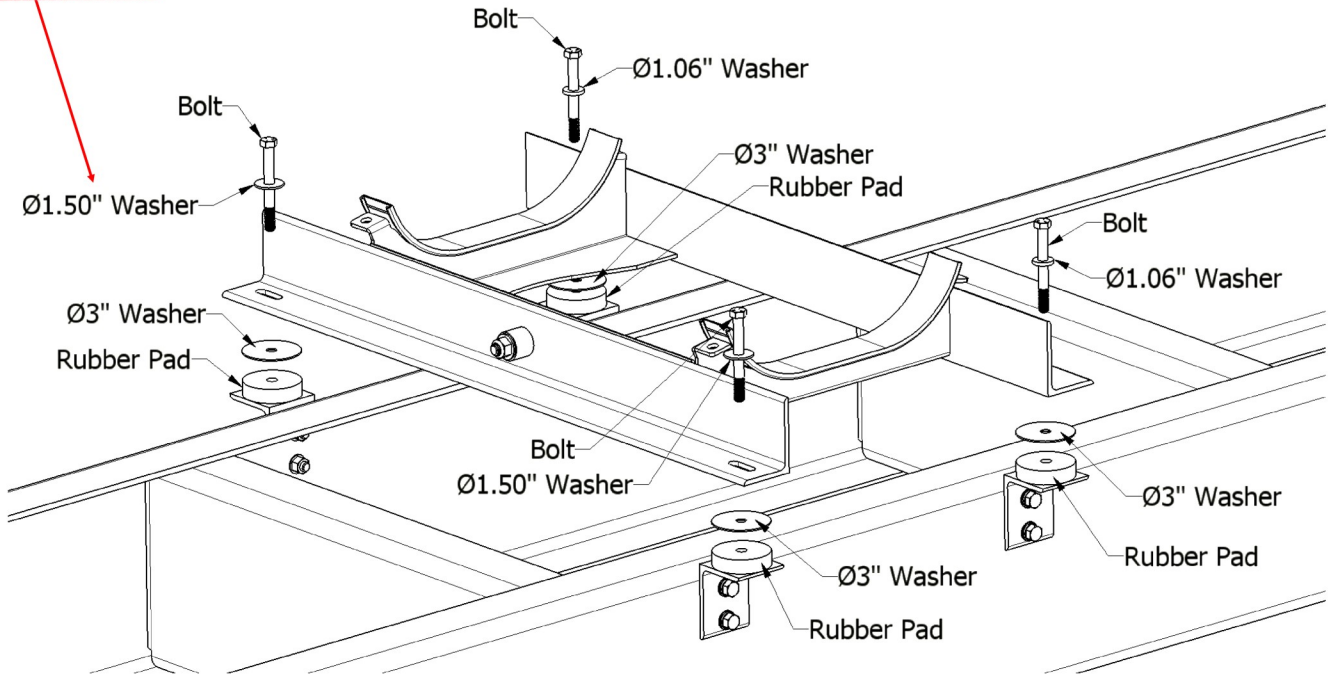


STEP 6:

Lift each FRONT corner of the cradle and slide (1) Rubber Pad and (1) $\varnothing 3''$ Washer between the Mounting Angle and the Cradle. Insert (1) Bolt through (1) $\varnothing 1.50''$ Washer through the Cradle slot and all the way through the Mounting Angle.

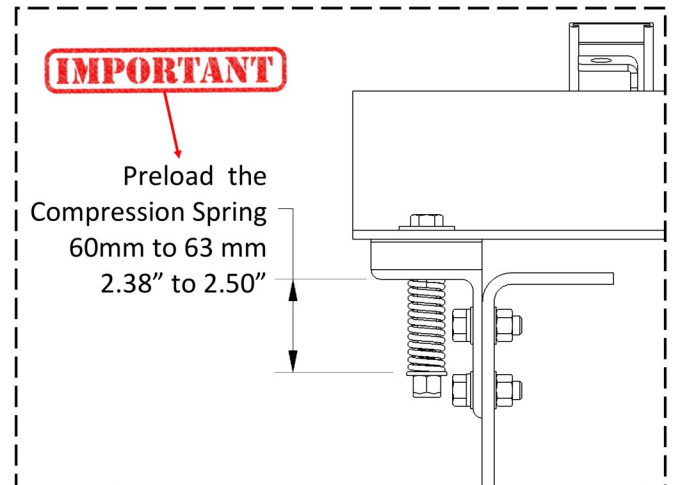
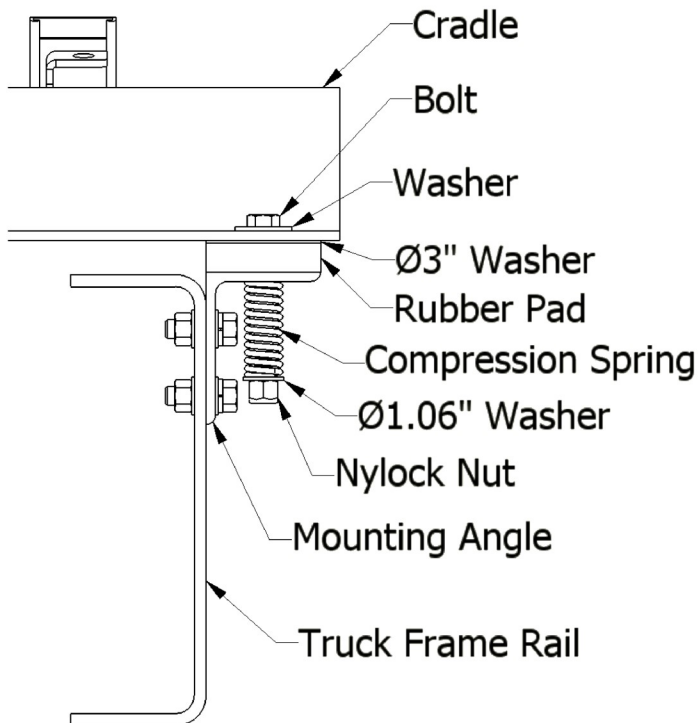
Lift each REAR corner of the cradle and slide (1) Rubber Pad and (1) $\varnothing 3''$ Washer between the Mounting Angle and the Cradle. Insert (1) Bolt through (1) $\varnothing 1.06''$ Washer through the Cradle hole and all the way through the Mounting Angle.

IMPORTANT the larger $\varnothing 1.50''$ Washers belong overtop the oblong slots on the pivot side of the Cradle.



STEP 7:

Slide the (4) Compression Springs, (4) $\varnothing 1.06''$ Washers and thread the (4) Nylock Nuts on each Bolt at each Mounting Angle. Adjust the Compression Spring preloading to achieve between a 2-3/8'' to 2-1/2'' length. The completed mounting connection is as shown;



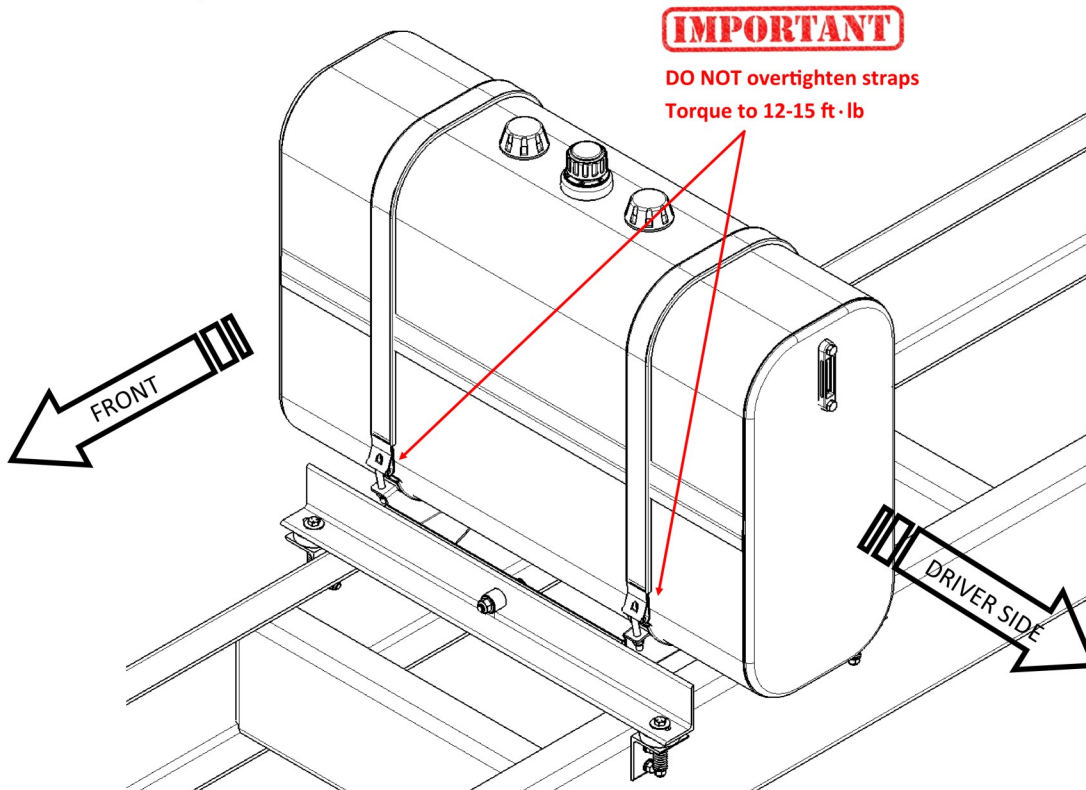
STEP 8:

Replace the Reservoir - which was removed in step 1 - filler cap UP and the sight gauge side of the Reservoir facing the Driver side of the truck.

Reattach the Straps using the hardware originally removed in step 1.

Hand tighten the Strap nuts, do not use an impact tool to tighten as this may deform the reservoir.

The completed installation is shown;



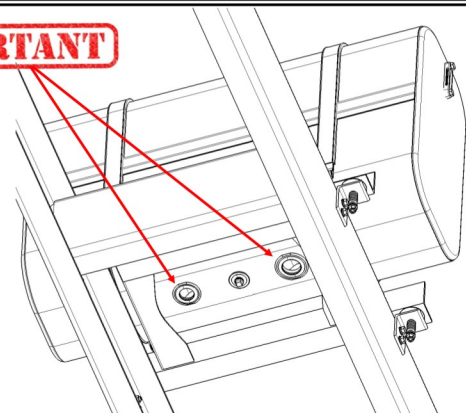
Pro Tips from **PROPOWER**

When making your hydraulic connections to the bottom ports; be sure to use only high quality threaded fittings (not cast) to avoid damage to the welded fittings. Be sure to NOT OVERTIGHTEN these fittings and use a high quality thread sealant compatible with hydraulic oil and aluminum such as **Jomar's White Stuff™**.

Your hydraulic lines MUST BE SUPPORTED as they are heavy and will vibrate. These forces can fatigue the metal around our welded ports causing failure.

DAMAGE RESULTING FROM THESE ISSUES ARE NOT COVERED BY OUR WARRANTY.

IMPORTANT



Congratulations on your completed installation!! After making your hydraulic connections you're ready to head securely down the road with 100 US gallons more oil capacity than you had just moments ago.

We are sure that you've been impressed with the quality of workmanship that we put into every Metaltanks product and look forward to hearing from you for your next replacement DIESEL FUEL tank.



Please contact us with any concerns at (877) 741-2365 or by email to sales@metaltanks.com

Visit us on the web at www.metaltanks.com

Copyright © 2020 by Propower Mfg Inc.

All rights reserved.

This publication or any portion thereof may not be reproduced or used in any manner whatsoever without written permission.